




**Saint-Gobain** the world leader in building materials designs, manufactures and distributes materials and solutions which are key ingredients in the wellbeing of each of us and the future of all.

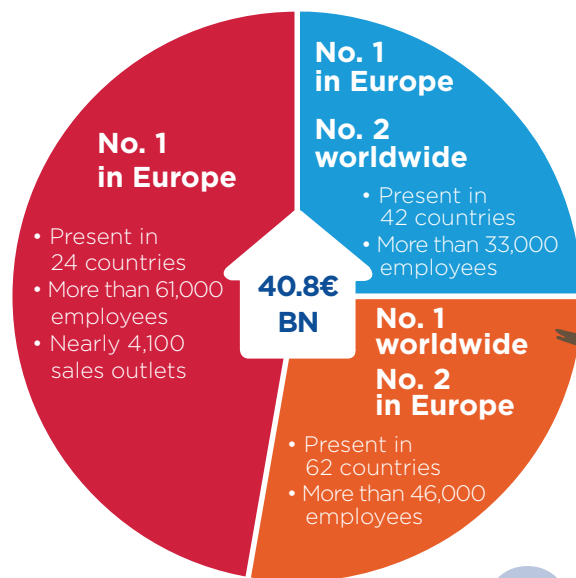
 **179 000**  
employees

 **8** research  
centers

€ **40.8€ BN**  
2017 sales

### 3 Activity hubs

-  Innovative materials
-  Construction products
-  Building distribution



**weber**  
SAINT-GOBAIN

is part of Saint-Gobain  
Construction Products

[www.saint-gobain.com](http://www.saint-gobain.com)

## Saint-Gobain Weber is the world leader in industrial mortars



**10,000 people**

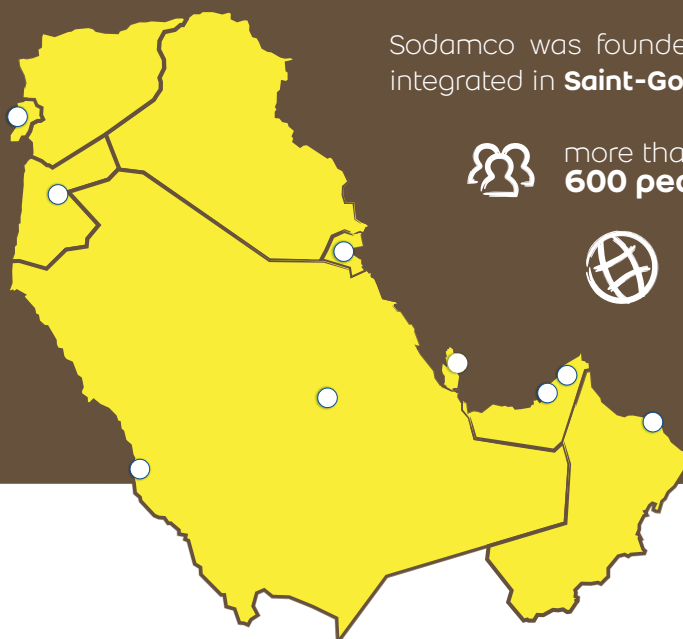


in **60 countries** worldwide



supported by almost  
**200 production units**

## Weber Middle East



Sodamco was founded in 1984 and was  
integrated in **Saint-Gobain Weber** in 2012.



more than  
**600 people**



present in  
**8 countries** in the Middle East



**7 production units**



Lebanon • UAE • Qatar • KSA • Jordan • Kuwait • Oman

## Context

Whether decorative, filling or structural, all Flooring systems are becoming more technical.

The role of the better informed stakeholders is growing. Therefore owners, operators, specifiers, contractors and applicators are looking for better solutions dedicated for each scope of use.

Challenges on construction sites are many:

- 1- Poor quality of finished slabs due to poor workmanship on sites
- 2- Speed & time constraints resulting in bad application and poor quality
- 3- Products quality and consistency: site mix by unqualified labor, mixing variations, uncontrolled raw material's quality
- 4- On site organization: low spaces, high number of workers

Concerns and interests at design stage are:

- 1- Cost and quality of systems / solutions
- 2- Compliance with international standards
- 3- Performance, consistency and durability
- 4- Acoustic characteristics (hotels/schools/hospitals/ residential buildings...)
- 5- Thermal efficiency: regulations in UAE, Qatar, and KSA

**Weber has over 40 years worldwide experience, thru hundreds of millions m<sup>2</sup> of flooring solutions.**

Close contact and cooperation with customers and approved applicators have positioned Weber as a world leader in mortars in general and flooring solutions in particular.

The local technical assistance and advice backed by Flooring competence centers located in Europe is at the service of every client.

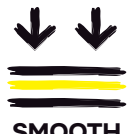
All the above positioned Weber flooring products as a preferred solution for the flooring professionals

سريع التغطية



**FAST COVERING**

أرضية ناعمة



**SMOOTH FLOORING**

قابل للضخ



**PUMPABLE**

مرور المشاة



**FOOT TRAFFIC**

## Flooring properties

For every use and purpose, weber proposes specific solutions and features:

- Self-leveling
- Fast drying: fast to cover (24 hours)
- Fine smoothing: smooth finish suitable for thin coverings
- Pumpable: easy to apply, less workmanship, and faster job sites
- Fast foot traffic after application
- Thermal insulation system for a better comfort
- High strength: compressive and flexural strength for heavy duty premises
- Acoustic insulation system reducing impact noise from the floor
- Low shrinkage: low risk of cracks

## One solution for every use



# Product Selector

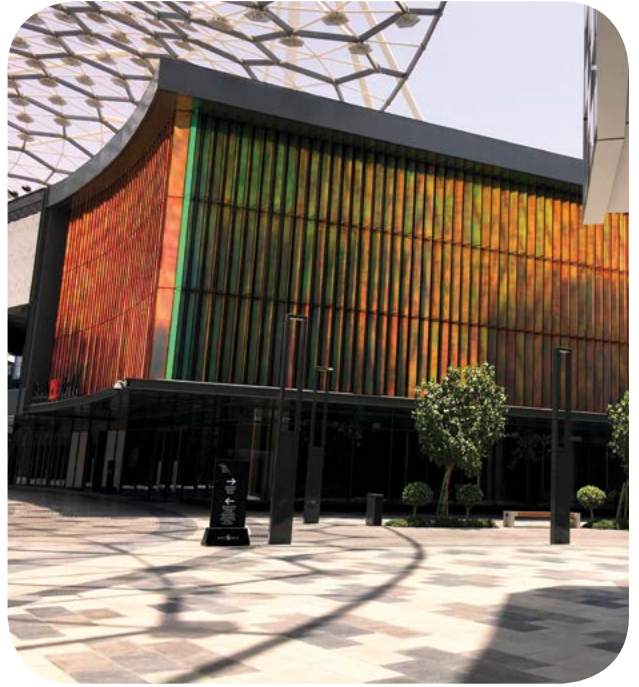
		Fast drying			Normal drying	
		weberfloor easy 625	weberfloor smooth FD	weberfloor 525 FD	weberfloor 535 FD	weberfloor 514 SL
Product properties	Foot traffic	24 hrs	3 - 4 hrs	3 - 4 hrs	3 - 4 hrs	12 hrs
	Time to cover	Depending on site conditions and thickness	12-48 hrs	From 24 hrs	From 24 hrs	From 72 hrs
	Thickness (mm)	20 - 100	1 to 10	2 to 30	2 to 30	2 to 30
	Pumpable	yes	yes	yes	yes	yes
	Compressive strength (Mpa)	25	20	25	35	25
	Flexural strength (Mpa)	6	6	6	10	6
	Shrinkage	Low	Low	Low	Low	Low
Scope of use	Hotel high load and pedestrian traffic	•			•	
	Hotel low to medium pedestrian traffic	•	•	•		•
	Hospital		•	•	•	•
	Schools	•	•	•	•	•
	Malls	•	•	•	•	•
	Residential buildings apartments	•		•		•
	Residential building: bathrooms & kitchens	•				
floor finishing	Vinyl		•	•	•	•
	Carpet	•	•	•	•	•
	Parquet	•	•	•		•
	Tiles	•	•	•	•	•
	Linoleum		•	•	•	•



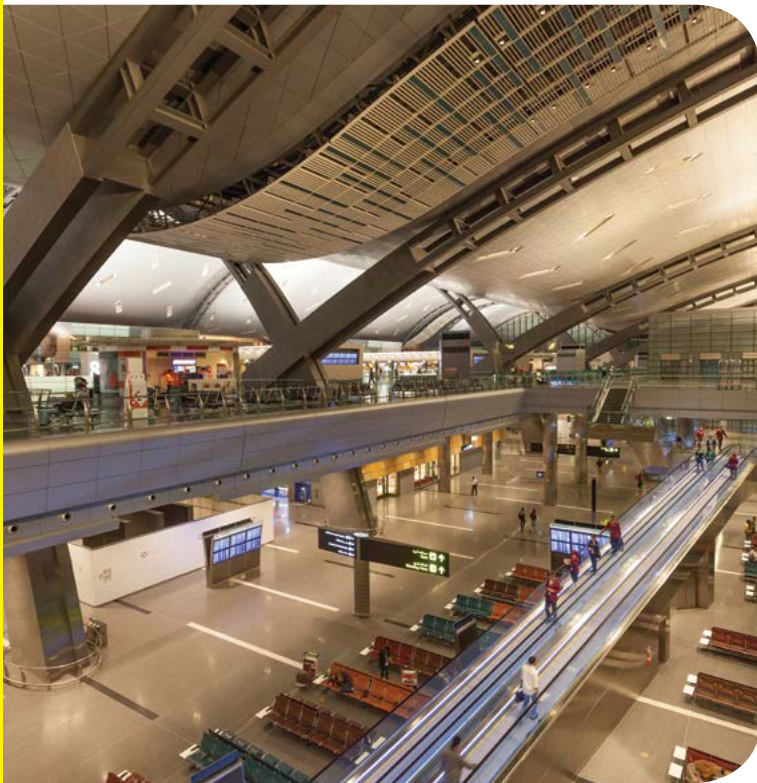
# Project references



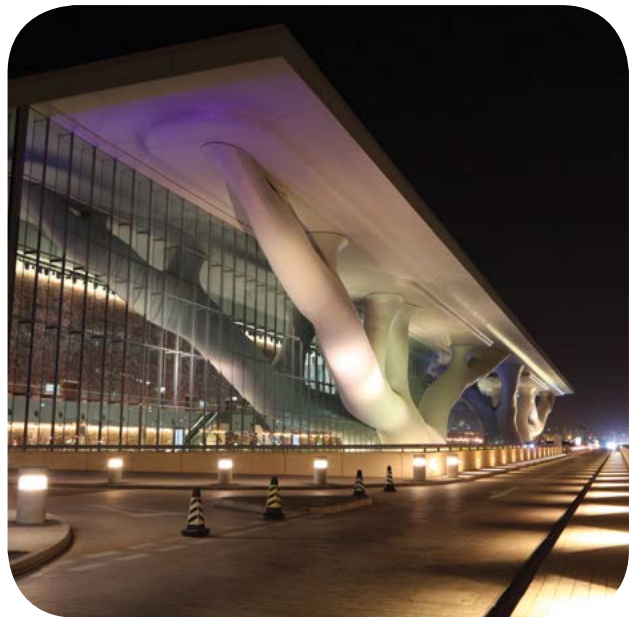
*Al safa school, Dubai - UAE*



*Citywalk, Dubai - UAE*



*New hamad international airport, Doha - Qatar*



*National convention center, Doha - Qatar*



*Cultural center, Lons le Saunier - France*





## Index

Fine smoothing .....	P. 6
Thin levelling .....	P. 7
Thick pumpable screed .....	P. 9
Filling screed .....	P. 12

# Fine smoothing

Hospitals, schools, hotels, offices, and other projects' floors are treated with specific technical methods in order to receive different types of floor coverings.

In thin levelling conditions, before covering with rubber vinyl, linoleum, carpet or wooden floor coverings, it is recommended to even smoothen the substrate by using **weberfloor smooth FD**, a fine smoothing and self-levelling compound, guaranteeing: high quality substrate for thin floor coverings, even, resistant and with regular porosity for good bonding. Weber fast covering fine smoothing levelling product enables specialized applicators to covers the floors after 12 to 48 hours from application.

**weberfloor smooth FD** is a fast drying cement based fine smoothing and Self-levelling product used for floor levelling ranged from **1 to 10mm**.



## weberfloor smooth FD

Packaging 23 kg

- Fast covering
- Self levelling
- Smooth finish
- Foot traffic at 3-4 hours
- Compressive strength: 20 MPa

سريع التغطية



FAST COVERING

أرضية ناعمة



SMOOTH FLOORING



## INSTRUCTIONS FOR USE

### Substrate

- All surfaces should be clean, dry, and free from grease, laitance, oil and dust.
- Remove all loose material, broken pieces of concrete.
- Defected surfaces in new and old concrete must be repaired before applying the flooring products.
- Concrete substrate should be at least 3 months old and structurally stable. If the average moisture content of the floor is  $>3\%$  with no single value  $>5\%$ , **weberfloor MB**, the water vapor barrier must be applied before the application of **weberfloor smooth FD**.
- If the average moisture content of the floor is  $\leq 2\%$  with no single value  $>2.5\%$ , prime the surface with **weberfloor 4716** before the application of **weberfloor smooth FD**.



### Product preparation & application

- Mix with a drill mixer by respecting the water ratio. Allow to stand for 2 minutes then pour the mixed material into the prepared substrate.
- Pumpable

Limit the work areas into manageable sections of approximately 50m<sup>2</sup>. Reduce the width of the work area when applying in warmer temperatures ( $>35^{\circ}\text{C}$ ). Pour the mixed material onto the prepared surface, then immediately spread it with a large metal trowel or spiked roller to help in levelling and smoothing the surface.

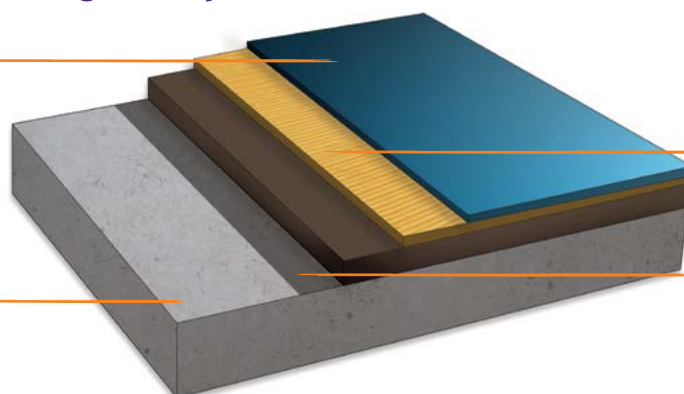
### Consumption

Approximately 1.7 kg/m<sup>2</sup>/1mm

## ■ Ideal solution for thin layers adjustment

Resilient floor:

- Rubber
- Vinyl
- Linoleum
- Wooden flooring



Fine smoothing  
**weberfloor smooth FD**

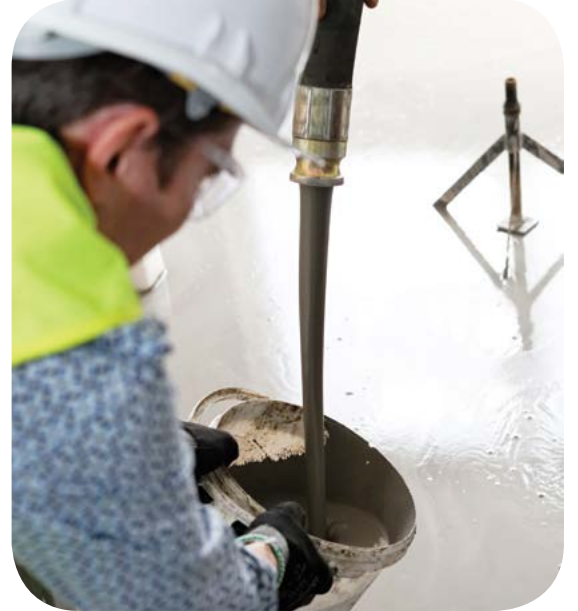
Primer  
**weberfloor 510 prime**



# Thin levelling

In areas with medium to heavy foot traffic within the hotels, hospitals, shops, schools, residential, and commercial buildings, surface irregularities ranging from 2 to 30mm will require floor levelling in order to receive a proper final covering.

**weberfloor 535 FD**, **weberfloor 525 FD**, & **weberfloor 514 SL** are improved self-levelling products with high characteristics, designed to meet professional's requirements in terms of performance and application, ensuring smooth and leveled surfaces before applying floor finishes.



## Fast covering floor levelling



### weberfloor 525 FD

Packaging 25 kg

- **Compressive strength 25 MPa**
- **Fast covering**
- Self levelling
- Smooth finish
- 2-30 mm
- Good abrasion resistance



PUMPABLE



FAST COVERING



SMOOTH FLOORING



### weberfloor 535 FD

Packaging 25 kg

- **High compressive strength 35 MPa**
- **Fast covering**
- Self levelling
- Smooth finish
- 2-30 mm
- High abrasion resistance



PUMPABLE



FAST COVERING



SMOOTH FLOORING



ABRASION RESISTANT

## Self levelling flooring compound



### weberfloor 514 SL

Packaging 25 kg

- **Compressive strength: 25 MPa**
- Self levelling
- Smooth finish
- 2-15 mm (can reach 30 mm at punctual areas)



PUMPABLE



SMOOTH FLOORING





## INSTRUCTIONS FOR USE

### Substrate

- All surfaces should be clean, dry, and free from grease, laitance, oil and dust.
- Remove all weak, loose material, and broken pieces of concrete until reaching the sound concrete.
- Defected surfaces in new and old concrete must be treated before applying the flooring products.
- Concrete substrate should be at least 3 months old and structurally stable. If the average moisture content of the floor is  $>3\%$  with no single value  $>5\%$ , **weberfloor MB**, the water vapor barrier must be applied before the application of **weberfloor smooth FD**.
- If the average moisture content of the floor is  $\leq 2\%$  with no single value  $>2.5\%$ , prime the surface with **weberfloor 4716** before the application of **weberfloor smooth FD**.

### Product application

The product can be applied at thickness between 2 to 30mm

- **Pumpable**
- Pouring (mix with drill machine and respect water ratio)

In case of hand application, limit the work areas into manageable sections of approximately 50m<sup>2</sup>.

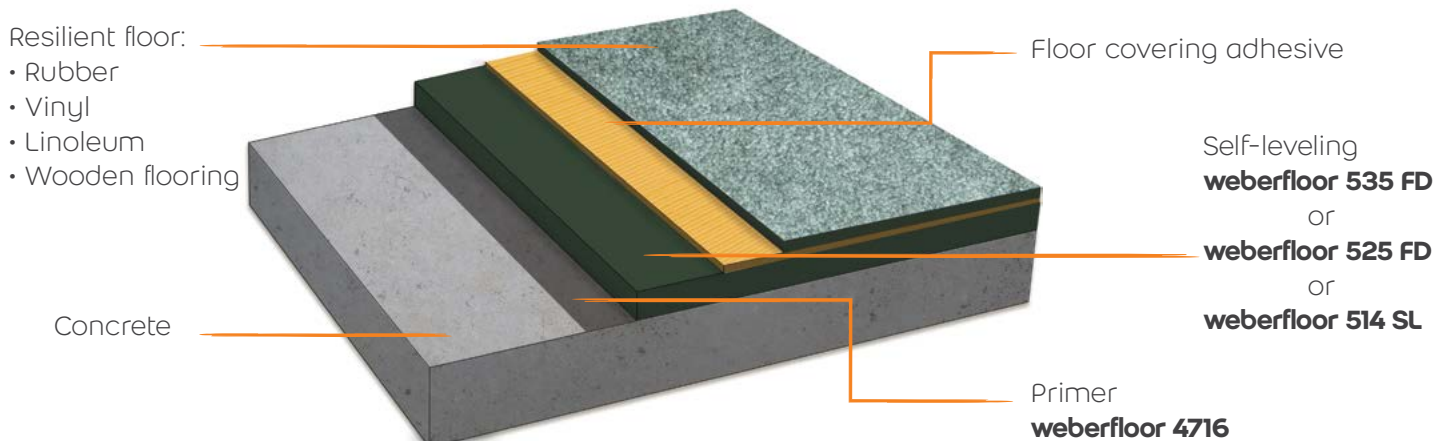
Reduce the width of the work area when applying in warmer temperatures ( $>35^{\circ}\text{C}$ ).

Pour the mixed material onto the prepared surface, then immediately spread it with a large metal trowel or spiked roller to aid in levelling and smoothing the surface.

### Consumption

Approximately 1.7 kg/m<sup>2</sup>/1mm

## ■ Ideal solution for levelling and smoothing irregularities





# Thick pumpable screed

Traditional screed is usually a mix of cement and sand in poor site conditions. Premixed screed contains, in addition to cement and sand, special additives that improves the product's characteristics such as setting time, shrinkage, strength and other... Quality control is an essential key for achieving a constant mix.



## Traditional screed:

- Site mixing of cement and aggregates
- Inconsistent of mixing quality
- Very messy site
- Considerable Wastage



## weber screed:

- Pre-mixed product made from special cement and additives
- Consistent mixes & Good quality: controlling setting time, shrinkage, strength, flowability...
- Organized, cleaner site & quick application for time saving
- No wastage



## weberfloor easy 625

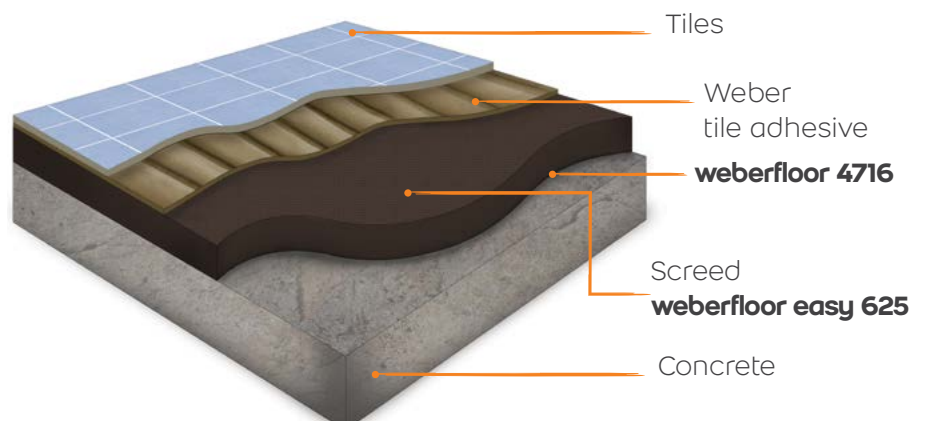
A high performance screed that can be used at different thicknesses and has multiple function. When used as bonded, un-bonded or floating screed, care should be done on the substrate in order to avoid any possible future failures.

- **Easy levelling**
- **Pumpable**
- **Low shrinkage**
- **Fill irregularities up to 100mm**
- **Compressive strength: 25 MPa**
- **Can be covered directly with tiles**



## Screed under tiles

**weberfloor easy 625** can be used as bonded screed to adjust floor thicknesses that are intended to be covered with tiles.



## Comfort solutions

**weberfloor easy 625** can be used for comfort purpose solution as part of the acoustic and thermal insulation systems.

### a - Thermal insulation system

15 - 20% of total building heat loss is through the floor. Thermal bridges created at floor/wall junctions, inconstant internal temperature condition, and loss of energy are main reasons to insulate a floor.

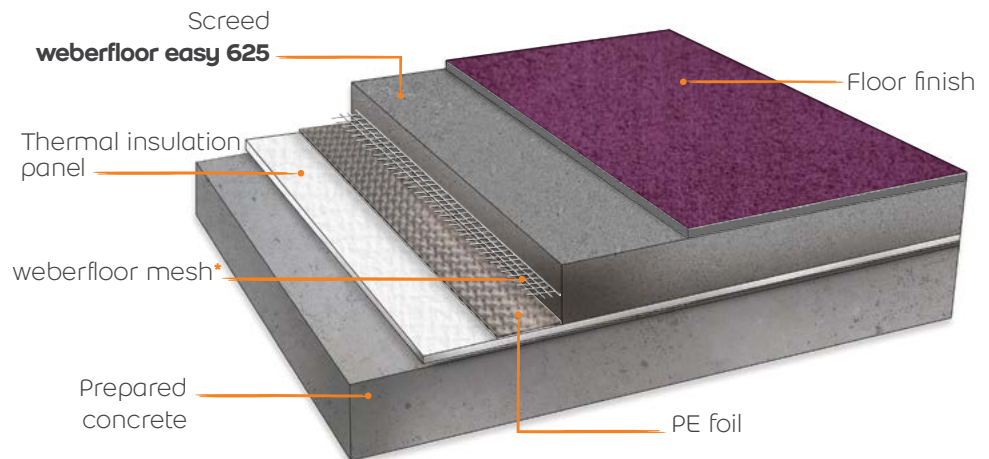
Weber offers a thermal floor insulation system solving the loss of heat and maintaining a constant internal temperature that provides the end-user the needed comfort in addition to saving energy that meets the green buildings requirement.

**weberfloor easy 625** is applied as floating application on top of the insulation board then covered by the required floor finishing.

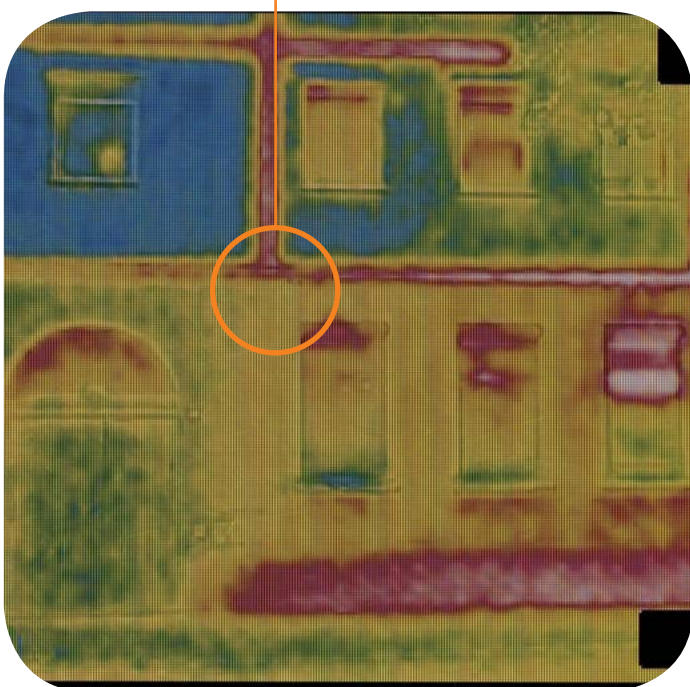
Based on the standard DIN 18560-2:2004:

The minimum thickness requirement of the screed on top of the insulation material depends on the following factors:

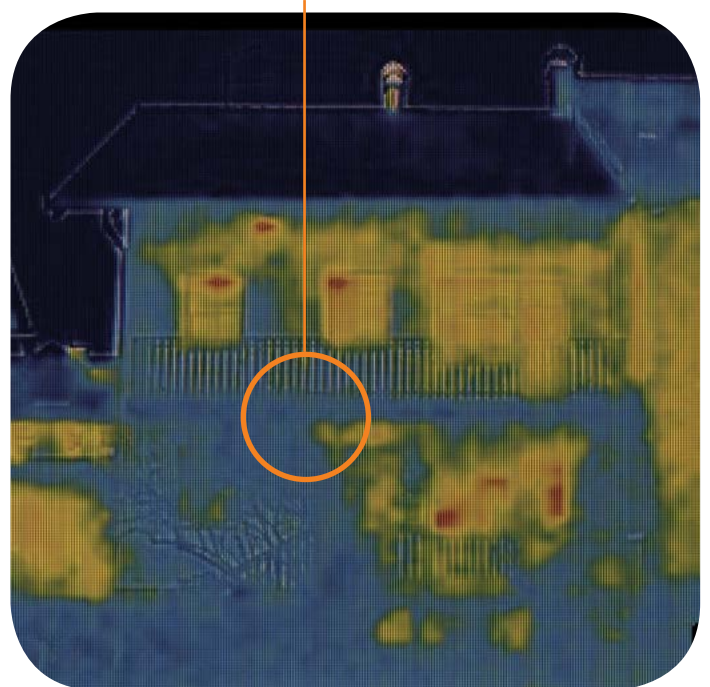
- Compressibility of the insulation material (this will be different per type of material)
- Flexural strength of the screed material
- Max expected loads on top of the floating floor (point loads and surface loads)



**Non insulated floors**



**Insulated floors**



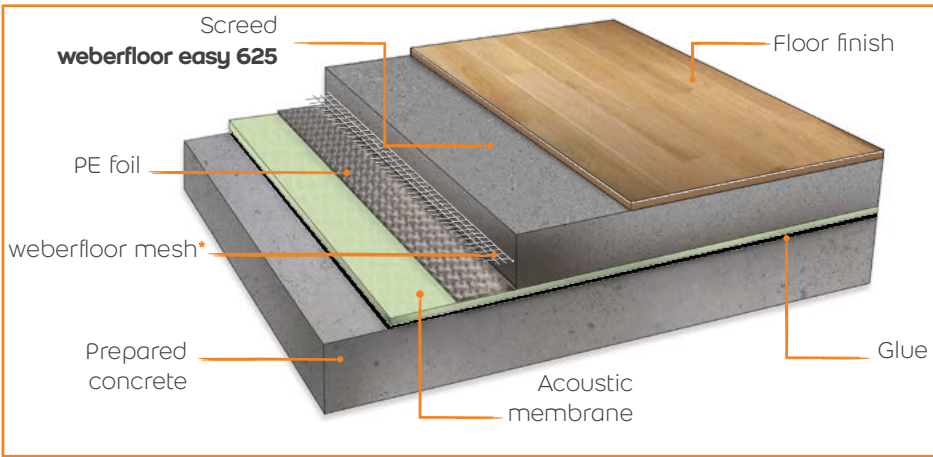


b - Impact sound insulation system

In specific projects such as hotels, schools, hospitals, where sound insulation is essential for the daily comfort, weber offers an impact sound insulation flooring system, an effective floating floor application which reduces the noise transmitted through the floors.

APPLICATION

after cleaning well the substrate, the acoustic membrane is glued on the concrete then, **weberfloor easy 625** is applied on top at a specific thickness that provides the required sound reduction.



Impact sound reduction level

The level of **disturbing noise, caused by echoing, footsteps, impact of falling objects, or vibrating machines**, can be reduced by using a good quality of floor sound insulation system.

Specific sound insulation systems are available in order to reach **the required noise reduction (dB)** whether in new constructions or renovations.



	Impact sound reduction requirement ( $\Delta L_w$ )	Sound insulation membrane		Mortar	Total system
NAME	dB reduction per system	Sound insulation membrane	Membrane thickness	weberfloor thickness (weberfloor easy 625 or other)	
weberfloor sys RENOV	19 dB	weberfloor 4955	2.5 mm	25 mm	27.5 mm
weberfloor sys ECO	23 dB	webercomfort LITE	3 cm	40 mm	70 mm
weberfloor sys Perform	27 dB	webercomfort LITE	5 cm	40 mm	90 mm
weberfloor sys Silence	31 dB	weberfloor acoustic	1.5 cm	40 mm	55 mm

# Filling Screed

An economic range of multi-purpose screeds containing special additives that control the product's properties and performance.

## Multi-purpose screed



### weberfloor 630 TSC

Pre-mixed fiber reinforced screed.

- **Fiber reinforced**
- **Thickness: 30-80mm**
- **Compressive strength: >30 MPa**



### weberfloor 620 PMB

Polymer modified hydraulic binder and semi-dry screed

- **Rapid drying**
- **Polymer modified**
- **Bonded, un-bonded, floating**
- **Compressive strength: >30 MPa**



### weberfloor 610 EHS

High performance screed for heavy duty purpose

- **Flowable screed**
- **High compressive strength: 55 MPa**
- **Thickness: 50 – 150mm**

## Complementary products

### Floor covering adhesives

Floor covering adhesives	PVC panels or sheets or ubber	LVT (luxurious vinyl tiles)	Rubber	Linoleum	Parquet
weberfloor 4850	•		•		
weberfloor 4830					•
weberfloor 4816		•			
weberfloor 4825				•	

### Floor primers



### weberfloor VP

Damp barrier epoxy flooring primer



### weberfloor 4716

Acrylic based primer



### weberfloor epo prime

high performance solvent free flooring epoxy primer  
Part A: 9.6kg  
Part B: 2.4kg