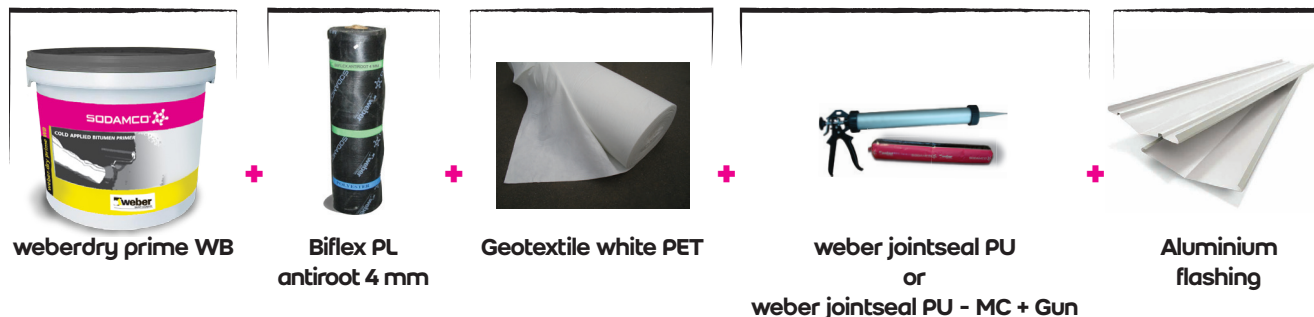


# Waterproofing of planted areas

## Recommended products



## Surface preparation

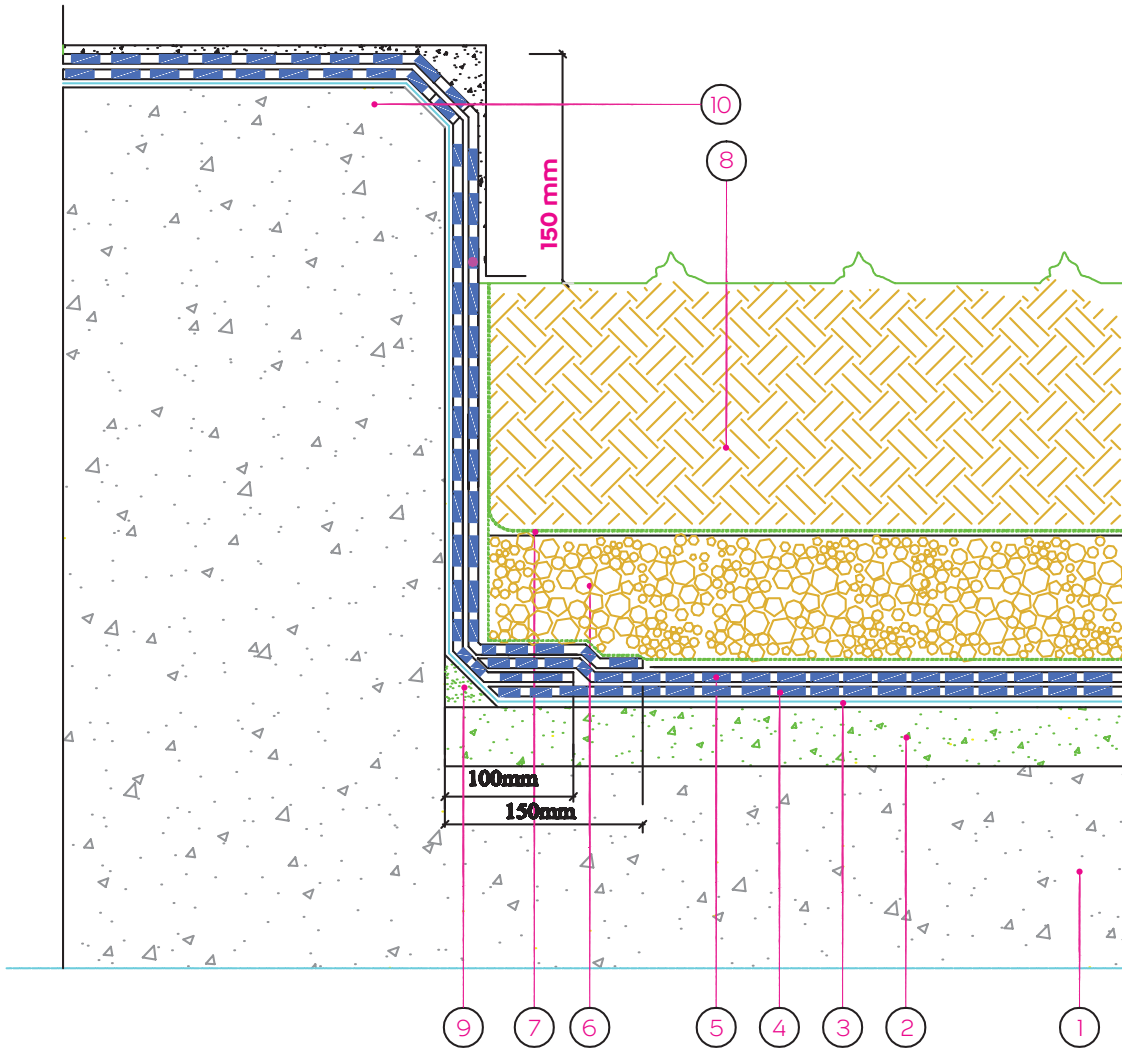
As mentioned previously, substrate should be clean and repaired. After correspondent steps have been respected, the waterproofing job can begin.

**Biflex PL antiroot** 4 mm is a 4 mm thick, waterproofing membrane torch applied made of SBS Bitumen modified with anti-root additives. It is reinforced with 180 g/m<sup>2</sup> of non woven polyester. It is supplied by rolls of 10 m x 1 m.

## Product application

- Prepare the floor and wall surfaces as mentioned in surface preparation
- Apply one coat of bituminous primer:  
**weberdry prime WB**, at a rate 150 to 250 grs/m<sup>2</sup>.
- Fully torch the first layer of **Biflex PL antiroot** 4 mm with 100 mm side lap and 150 mm end lap.
- Fully torch the second layer with staggered joints above the first layer of **Biflex PL antiroot** 4 mm as well.
- Apply one layer of a **Geotextile white PET** of 200 to 250 grs/m<sup>2</sup>.
- Lay a bed of Pebble round gravels of 100 mm thickness.
- Apply another layer of **Geotextile white PET** of 200 to 250 grs/m<sup>2</sup>.
- Fix the top of the membrane skirting using screws and washers by the mean of an Aluminum strip of 10 cm width (aluminum flashing) cut and bent to profile.
- Fill the groove provided in the aluminum flashing with Polyurethane sealant "**weber jointseal PU**" in order to completely seal the top of the skirting.

## Detailed waterproofing system for planted areas



- 1- Concrete deck
- 2- Screed to slope, 100 mm average thickness
- 3- One coat of bituminous primer type : **weberdry prime WB** at a rate of 250-300 grs/m<sup>2</sup>
- 4- First layer of root-resistant waterproofing membrane self-protected with green slate granule type: **Biflex PL anti-root** 4 mm
- 5- Second layer of root-resistant waterproofing membrane self-protected with green slate granule type : **Biflex PL anti-root** 4 mm
- 6- Draining layer - gravels 25/25
- 7- Filter layer, non-woven **Geotextile white PET**
- 8- Sweet soil of 300 mm thick minimum
- 9- Angle filler 50 mm x 50 mm type **weberep 331 TX**
- 10- Concrete upstand