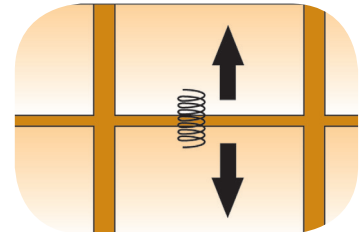


Application of tile grouts

◉ The importance of joints

Joints are very important elements because they have technical properties such as stress absorption originated from the tiles and substrate.

There are several types of joints depending on vertical and horizontal conditions from movement joints to construction joints.



◉ Corner joints

Vertical and horizontal corner joints should be filled with an elastic sealant to absorb the stresses that can occur in such areas.

Horizontal joints at a connection with walls, door frames should be cleaned from residual or cured material left.

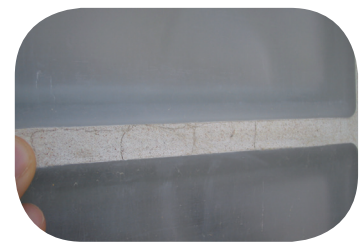
◉ Aesthetical problems

Aesthetical problems like cracks, white staining, residual grouts, or variation in color will occur if the grout product is not properly mixed, prepared and applied.

The consistency of the grout product is extremely important. If it is too wet when mixed, there is a good chance that the grout might fail over time.

As well, when polishing the tiles by machine, it can affect the tile grout. If the joint is not well filled with grout, it can leave some tiles without grout between them.

After polishing, it is very important to check if the grout is still sound and has enough thickness to play its role.



◉ Cleaning joints before grouting

Before grouting application, the tile adhesive should be fully cured and hard enough.

Joints should be sound and free from any excess of tile adhesive that could lead to poor joints resistance and non-homogeneous color of joint.

Recommended products (refer to product selector p6)

Tile grouts



1- Substrate preparation

Ensure that the joints are clean, free from residual or excess material. Grouting should be done no less than 24 hours after tiling application with a standard setting adhesive or 3 hours after tiling with a fast setting adhesive.



2- Method of application

Mix the product and let it rest for a few minutes before starting the application.

Fill the joints using a rubber trowel. Cementitious grouts like **weberjoint perfect** or **weberjoint** or **weberjoint deco** should be applied diagonally and pressed into the joints to fill them completely.

Clean the applied areas with a damp sponge to remove the excess material when the tile grout hardening process begins.

When the grout is completely dry, clean the tiles using a dry cloth.

weberjoint perfect can be used to fill joints from 1.5 to 20 mm (CG2WA).

weberjoint deco can be used to fill joints from 1 to 7 mm (C62WA).

weberjoint can be used to fill joints from 1.5 to 4 mm width*

weberjoint thick can be used to fill joints from 4 to 10 mm.

weberjoint glitter, a decorative cementitious grout with metallic effect can be used to fill joints from 1.5 to 7 mm on internal walls.

** For joints less than 1 mm or below, consult our technical department*



3- Special areas

For exceptional performance, apply **weber epox easy**, an epoxy tile grout for high traffic areas, large public pools, factories, etc...

Note

When applying grouts, allow the application to be properly dried and cured before stepping or walking on it. It is not advisable to immediately move furniture or heavy appliances on tiles until the grouts are completely cured and hard enough to resist the expected abrasion and compression.