

## Case 02 How to apply scraped Monocouche and mineral renders on dense concrete blocks

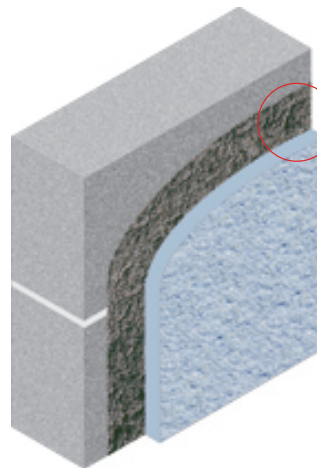
### Recommended products

#### SOLUTION A



#### Preparation

Ensure that all areas are free from any residue that may interfere with the bond of materials to be applied. In hot weather, substrate should be humidified 2 hours before application.



Use **weber.premix SRC-1** as a key coat under:

- **weber.pral F\***
- **weber.pral K\***
- **weber.cal palm\***

\* Machine or hand application

#### SOLUTION B



- Use **weber.premix SRC-1** as a key coat
- Use **weber.premix SP-1** as smooth plaster
- Use **weber.cal SP/T\***

\* Tyrolean box or spray gun application

