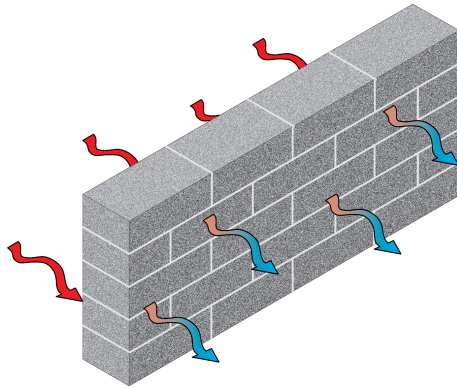


Case 08 How to insulate single-skin construction

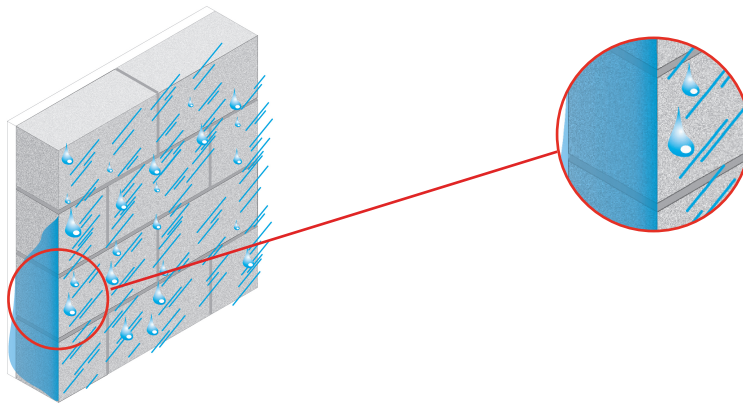
Thick materials required

Single-skin solid wall construction, requires very thick materials to provide a good thermal performance. It takes space and the construction becomes heavy.



Poor resistance to weather

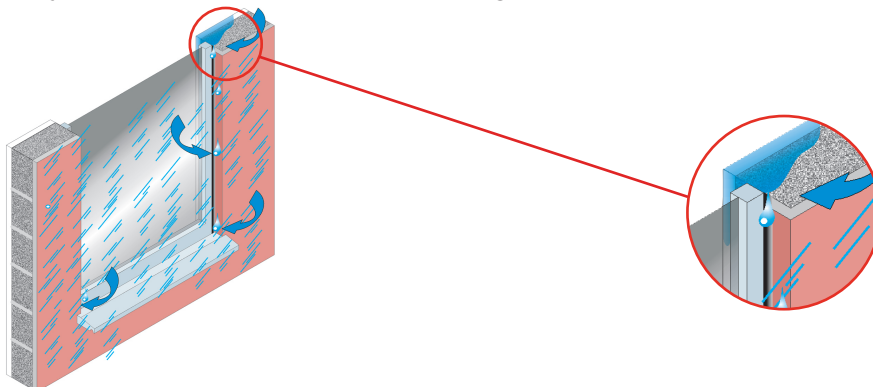
Even with thick masonry blocks in single skin construction, the need for a protective and decorative cladding is there to achieve proper resistance to weather.



Poor sealing

Without careful detailing at openings, water can track around windows and door frames etc. bypassing seals at openings.

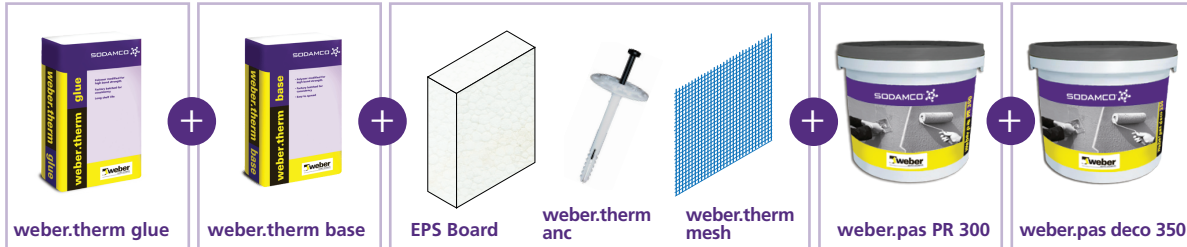
Good quality and reliable seals are paramount. Simple gun-applied sealants used with cavity construction are often poorly applied. If they fail for whatever reason with single-skin construction, the construction is immediately exposed.



Solution 08 Use weber.therm OM External Insulation System

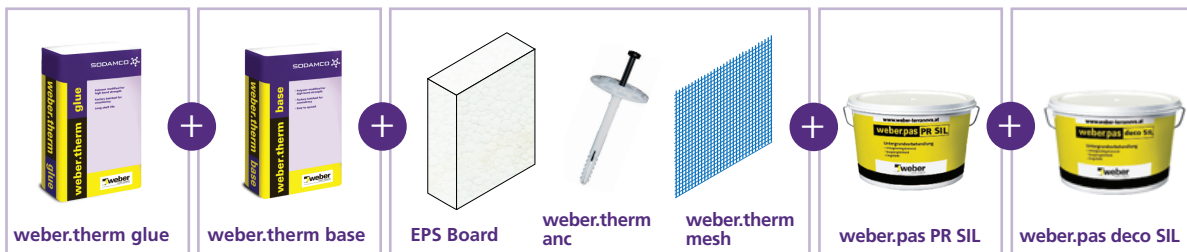
Recommended products

Acrylic finish

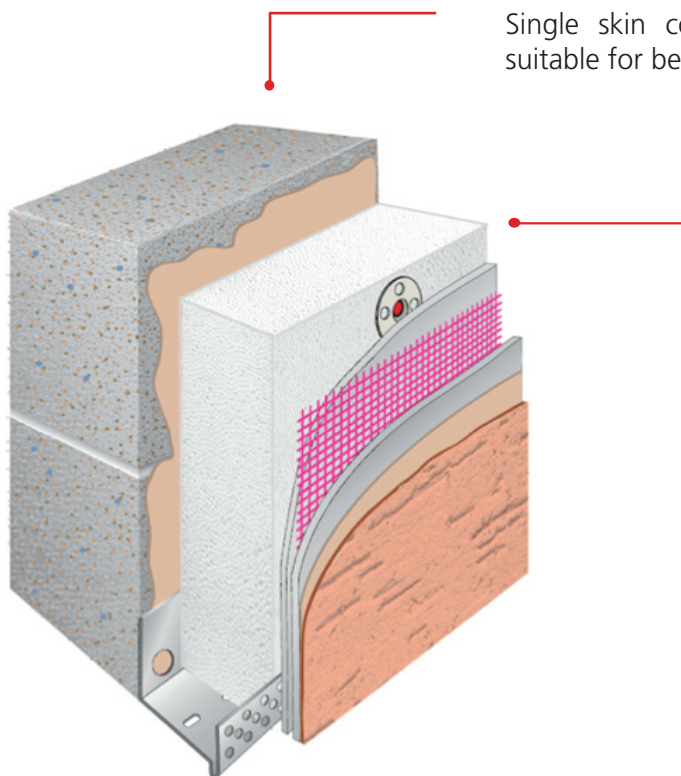


or

Silicate finish



• All the components of weber.therm OM system



Single skin construction in a thickness suitable for bearing purposes only.

Insulating

weber.therm OM external wall insulation system provides thermal insulation, protects the structure and offers several external finish options:

- 1- Acrylic
- 2- Organo mineral (Silicate)