

## Case 01 How to apply scraped Monocouche onto smooth concrete

### Smooth concrete

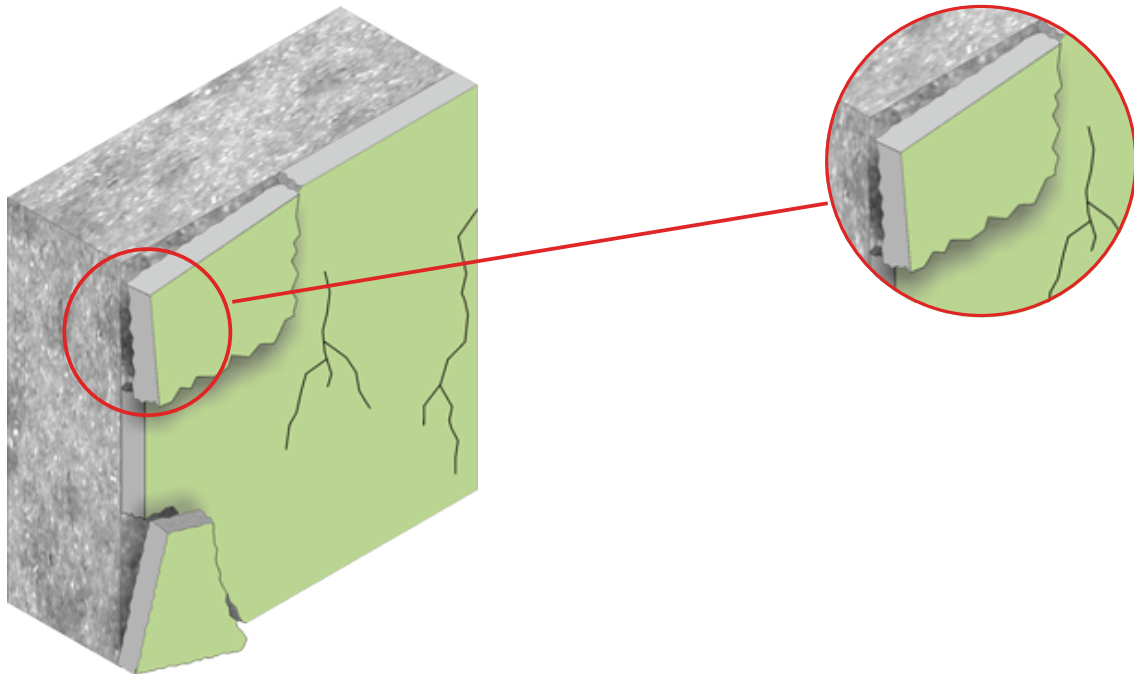
- **Little, no suction or no mechanical key**

In order that the render bonds to the substrate it will require both suction and a good key coat.

On the concrete surfaces we could face the mould release agent that could affect the adherence of the render.

- **Crack and debonds**

Smooth concrete may offer the worst of all conditions for all rendering, with the possibility of residual traces of release agents and both poor key coat and low suction.



## Solution 01

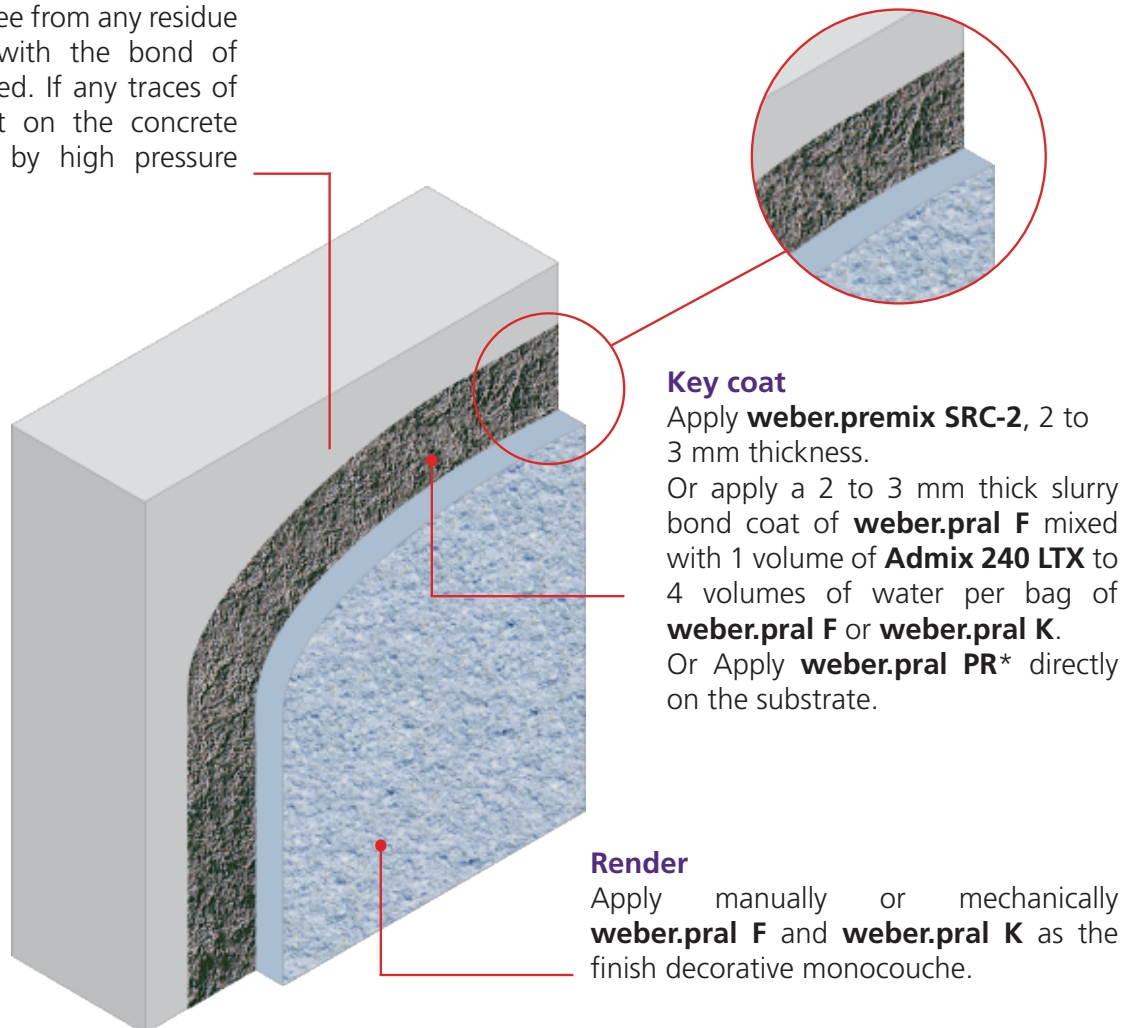
Apply a key coat *weber.premix SRC-2*, *weber.pral F* and *weber.pral K*

### Recommended products



### Preparation

Ensure all areas are free from any residue that may interfere with the bond of materials to be applied. If any traces of mould release agent on the concrete surfaces, remove it by high pressure water.



#### Key coat

Apply **weber.premix SRC-2**, 2 to 3 mm thickness.  
Or apply a 2 to 3 mm thick slurry bond coat of **weber.pral F** mixed with 1 volume of **Admix 240 LTX** to 4 volumes of water per bag of **weber.pral F** or **weber.pral K**.  
Or Apply **weber.pral PR\*** directly on the substrate.

#### Render

Apply manually or mechanically **weber.pral F** and **weber.pral K** as the finish decorative monocouche.

*\* Please refer to our technical department*