

Glittering cementitious tile grout with metallic effect

PRODUCT

weberjoint glitter is a cement-based pre-mixed non-shrink grout with decorative effect, used for filling tile joints on walls in wet and dry areas. It is water resistant, easy to apply, and can be cleaned easily.

It comes in one component and it only needs to be mixed with water. The glittering effect of **weberjoint glitter** will give a unique aesthetical aspect to walls. Available in 6 colors with silver or gold effect (please refer to our color chart)

SCOPE OF USE

weberjoint glitter is suitable for interior wall applications to fill joints from 1.5 to 7mm width between:

- Ceramics
- Mosaic
- Glass mosaic
- Porcelain tiles.

CHARACTERISTICS

| | |
|---------------|---|
| Composition | Cement, mineral charges, hydrophobic agent, synthetic organic polymers and pigments |
| Fresh density | 1.6 kg/liter |
| Pot Life | 1 hr at 20°C |
| Mixing Ratio | 1.55 to 1.8 L / 2.5 kg bucket (depending on colors) |
| Yield | 2.5 Kg powder will give approx. 2.5 liters of paste |

GLITTER GROUT CONSUMPTION FORMULA

$$C = 0.16 \times E \times H \times [(L + W) / (L \times W)]$$

C: Consumption (kg/m²)

E: Joint Width (mm)

H: Tile Thickness (mm)

L: Tile Length (cm)

W: Tile Width (cm)

INSTRUCTIONS FOR USE

PRECAUTIONS

Before grouting with weberjoint glitter, make sure that the adhesive has completely dried; it will depend on site and weather conditions.

- 24 hours minimum after standard tile adhesives application (**webercol flex**, **webercol plus**, **webercolfix**, etc...)
- 4 hours minimum after fast-setting tile adhesives application (**webercol fast**, **webercol FI**, **webercol flex FS**)
- 14 days minimum after tiling with traditional "site-mix" mortar on floors (minimum 3 days for walls)



PACKAGING

| Leb | Syria | Jordan | UAE | Qatar | Kuwait | KSA | Oman |
|--------|--------|--------|--------|--------|--------|--------|--------|
| 2.5 kg | 2.5 kg | 2.5 kg | 2.5 kg | 2.5 kg | 2.5 kg | 2.5 kg | 2.5 kg |

- Some tiles with a matt or porous texture are prone to surface staining when coloured grouts are used. It is recommended to check that no stain will occur by testing on a small tiled surface before starting the whole grouting job

SURFACE PREPARATION

weberjoint glitter must be applied after a minimum of 24 hours from tiling, allowing the tile adhesive to set and most of the moisture to evaporate.

Surfaces to be grouted must be sound, thoroughly cleaned, free from dust, oil or grease and all excess of adhesive and mortar removed before the application of **weberjoint glitter**.

Joint should be emptied to at least 2/3 of the thickness of the tiles and should not exceed 7 mm of width.

PRODUCT PREPARATION

Mix 2.5kg of **weberjoint glitter** with 1.55 to 1.8L. of clean cold water using an electric mixer at low speed (<300 rpm). Mix until a uniform lump free paste is obtained. Let the paste rest for 5 minutes and mix again for 1 minute before starting the application.

PRODUCT APPLICATION

Apply **weberjoint glitter** with a rubber float diagonally into the joints leaving no voids by filling all the gaps.

After 2 to 4 hours (depending on ambient temperature) from

application, remove the excess grout with a damp sponge and finish gently the entire surface with a dry cloth.

TO OPTIMIZE THE METALLIC EFFECT

After 24 hours, and after the grout has hardened and dried, apply muriatic acid diluted (1acid : 9 water) on the joint by brush and leave it for 5 minutes, then clean the grouts with water using a damp sponge.

CLEANING

Clean the tools such as drill, rubber trowel and bucket with water. Cured material need to be removed mechanically.

STORAGE

12 months after manufacturing date in original and non-open packaging, under cover, in dry condition, away from humidity, protected from extreme temperatures and direct sunlight.

SAFETY PRECAUTIONS

The product contains cement powders which, when mixed with water, release alkalis that could be harmful to the skin. It is preferable that the application be done in a ventilated area, and to wear protection for hands, eyes and respiratory system and to avoid breathing dust. Splashes on the skin should be washed away by cleaning thoroughly with soap and water. In case of contact with eyes, wash thoroughly with clean water and seek medical attention. If swallowed, do not induce vomiting and seek medical attention. The product is non-flammable.

DISCLAIMER

While the company guarantees its products against defective materials, the use and application of these products are made without guarantee since the conditions of their application are beyond its control. It is recommended to verify with the company that the product is suitable for the intended use, and that this Data Sheet version is the latest one. The company may modify it without prior notice. Technical characteristics are listed for guidance only. For more information, please contact the company's office in your location.

NOTE

The information included on this Technical Data Sheet is the sole property of SODAMCO Holding. The unauthorized disclosure, use, dissemination or copying (either whole or partial) of this data sheet or any information it contains, is prohibited and subject to legal pursuit.

PG:14

weberjoint glitter colors*



GS110 - Icy White



GG120 - Shiny Gold



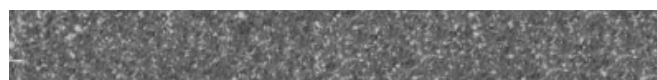
GG124 - Redwood



GS126 - Electric Brown



GS170 - Metallic Silver



GS173 - Black Pearl

* These printed colors are only displayed for reference and may vary from real applied samples.