



# weberepox easy

Two-component high performance epoxy tile grout and adhesive

*Tile Fixing*

Leb	Egypt	Jordan	UAE	Qatar	Kuwait	KSA	Oman
3.8kg	4kg	4kg	4kg	4kg	4kg	4kg	4kg

## PRODUCT

**weberepox easy** is a 100% reactive two components epoxy tile adhesive and tile grout product with very easy water cleanable properties exceeding the requirement of the standard ANSI 118.3, excellent chemical resistance, high strength, and easy application. It is designed for numerous application needs. In addition to its waterproofing and excellent workability properties, it is especially blended to produce non-sag and stain resistant properties when used as tile grout, non-slip property when used as tile adhesive and high compressive strength at 48 hours. Due to its special additives, the product maintains a good workability after 1 hour at 40°C.

**weberepox easy** is particularly recommended for tile grouting in medium and heavy duty, hygienic and corrosive environment.

## SCOPE OF USE

- Tiling and grouting of ceramics, mosaics, stones, etc..
- Specially recommended for bathrooms, showers and kitchens (private and collective)
- Repair of damaged tile joints
- Tiling on special substrates such as metal, etc...
- Highly resistant to chemical aggressions, cleaning under high pressure and heavy traffic
- For internal and external walls and floors
- Food production: fruit canning, meat & fish processing, dairy products, etc...

- Industries, Car showrooms, etc...
- Swimming pools

## ADVANTAGES

- Two components easy to mix
- Easy to apply
- Easy and fast to clean
- Anti-bacterial
- Good workability after 1 hour at 40°C
- High compressive strength
- Excellent chemical resistance
- Non-sag when used as tile grout
- Slip resistant when used as tile adhesive
- Good heat aging resistance
- Anti-Stain

## CHARACTERISTICS

Appearance	Two components: Part A: Resin + filler Part B: Hardener
Colors	Available in wide range of colors Special colors can be produced upon request
Application	Easy mixing and application
Mix density	1.7g/cm <sup>3</sup> (± 0.1)
Pot life @25°C	1 hour 30 min
Stain resistance	Good

Sag resistance	Non sag
Slip resistance	Non slip
VOC and formaldehyde Low VOC USEPA 24 Test	

## Test weberepox easy according to ANSI 118.3

Test results	Standard requirement	Results
Water cleanability	The mixed material shall be spreadable and water cleanable at 80 minutes	Pass
Sag in vertical	No change in shape of the joint shall be noticeable	Pass
Compressive strength	24.1 MPa	80 MPa at 7 days
Tensile strength	6.89 MPa	22 MPa at 7 days

## Chemical resistance

Test results weberepox easy	Results
Sugar 40%	No sign of surface cracks loss of gloss, etching, pitting, softening, etc...
Calcium chloride 1%	
Acetic acid 5%	
Citric acid 10%	
Formic acid 5%	
Oxalic acid 10%	
Ammonia in solution 25%	
Sodium hydroxide 50%	
Potassium hydroxide 50%	
Sodium chloride saturated	
Fuel	
Diesel	
Olive oil	
Ethylene glycol	
Glycerine	
Carbon tetrachloride	
Ethanol	
Kerosene	
Xylene	
Hydrogene peroxide 5%	
Hydrogene peroxide 15%	

## APPLICABLE STANDARDS

ISO 13007  
EN 13888  
EN 12004  
ANSI 118.3

## INSTRUCTIONS FOR USE

### SUBSTRATE PREPARATION

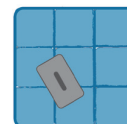
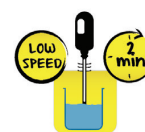
#### Grouting:

Before grouting, make sure that joints and tile surface are well cleaned, and dried. Remove dust or other contaminants with an air blower.

Do not clean tiles with acid cleaners.

#### Tiling:

New concrete must be a minimum of 28 days old. The surface to be covered shall be sound, dry, rigid, clean and free from impurities like grout, dirt, debris, oil, grease, curing agents, loose plaster etc...



### PRODUCT PREPARATION

Remove Part B (Hardener) from inside the part A (Resin + filler) pail and pour it into the part A. Mix well with a suitable electrical mixer at low speed (around 2 minutes) to ensure the proper chemical reaction until a smooth paste is obtained. Do not mix part A separately.

### PRODUCT APPLICATION

#### Grouting:

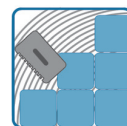
**weberepox easy** should be applied directly into the joints. By using a rubber trowel or scrapper fill the empty joints diagonally to ensure the joints are well filled. Remove excess grout with a grout float. Do not leave excess grout on face of tiles. Smoothing the joints by using a wet sponge then clean the tiles immediately, before the product dries, by using a clean and wet sponge. The tiles are cleaned easily with water. **weberepox easy** can be applied for joints width from 2 to 10mm. Ready for pedestrian after 24 hours at 25°C and for heavy traffic after 48 hours at 25°C.



#### Tiling:

Mix the two components and spread the adhesive over the surface using a serrated trowel. Tiles should be placed within the open time of the adhesive. Due to the slip resistance properties of the material, tiles can be fixed vertically.

Press firmly the tiles to ensure a good adhesion and remove surplus material from the face of the tiles immediately.



### CONSUMPTION

#### Tile adhesive consumption

When used as tile glue, consumption is from 3.5 to 10 kg/m<sup>2</sup> depending on thickness and the type of tiles.

## TILE GROUT CONSUMPTION

$$C = 0.18 \times E \times H \times [(L + W) / (L \times W)]$$

C: Consumption (kg/m<sup>2</sup>)

E: Joint Width (mm)

H: Tile Thickness (mm)

L: Tile Length (cm)

W: Tile Width (cm)

Examples of consumption (in kg/m<sup>2</sup>):

Tile size (cm) / Joint width (mm)	4	6	10
15x15	0.77	1.15	1.92
30x30	0.38	0.58	0.96
60x60	0.19	0.29	0.48

*These values only give an indication about the grout consumption. The real product consumption can differ depending on site conditions and wastage when grouting. Indicative consumptions calculated with a tile thickness of 8mm.*

## CLEANING

Clean tools and equipment with water before the material dries. Do not allow the epoxy to harden on equipment.

## STORAGE

12 months after manufacturing date in original and non open packaging, under cover, in dry condition, away from humidity, protected from extreme temperatures and direct sunlight.

## SAFETY PRECAUTIONS

Ensure adequate ventilation during application and avoid inhalation of vapors. Wear suitable gloves, clothing and eye protection. Direct contact with eyes will cause irritation and may cause serious damage if not treated. In case of contact with eyes, wash thoroughly with clear water and seek medical attention. Limited to professional use only.

## DISCLAIMER

While the company guarantees its products against defective materials, the use and application of these products are made without guarantee since the conditions of their application are beyond its control. It is recommended to verify with the company that the product is suitable for the intended use, and that this Data Sheet version is the latest one. The company are listed for guidance only. For more information, please contact the company's office in your location.

## NOTE

The information included on this Technical Data Sheet is the sole property of Saint-Gobain Middle East Holding SAL (previously SODAMCO Holding). The unauthorized disclosure, use, dissemination or copying (either whole or partial) of this data sheet or any information it contains, is prohibited and subject to legal pursuit.