



weberpas deco 350

Acrylic textured coating

*Façade and
Thermal Insulation*

Leb	Egypt	Jordan	UAE	Qatar	Kuwait	KSA	Oman
-	-	-	20kg	-	-	-	20kg

PRODUCT

weberpas deco 350 is a ready to use acrylic sanded finish coating. It includes a special selection of graded quartz sand and fillers that contribute to a unique workability properties while giving an exceptional aesthetic appeal to the product. Special additives improve the product resistance to water and UV lights, thus suitable for external and internal applications.

weberpas deco 350 can be used as finishing for external Thermal Insulation Composite system (ETICS) and for External lightweight steel framing system with direct render.

It's available in different textures:

- Ref 310: Ribbed finishes.
- Ref 320: Flexible Rolled finishes
- Ref 330: Decorative finishes
- Ref 350, 360, 370: troweld and sprayed sanded finishes.

weberpas deco 350 can achieve different textures by using different tools of applications (Trowels, rolls, sprayer,etc...).

PROPERTIES

- Ready to use
- Easy to Apply
- UV resistant
- Very low water permeability - allows the structure to breath
- Easy to renovate with any masonry paint

CHARACTERISTICS

Appearance	Ready to use acrylic coating
Composition	Polymers, selected fillers pigments and additives.
Colors	Available in wide range of colors
pH	8
Service temperature	Approx. -5°C to +70°C
Time to gain mechanical resistance	Not less than 7 days

INSTRUCTIONS FOR USE

SUBSTRATE PREPARATION

Substrate must be clean, sound and free from greasy matters and dust. Remove all traces of paint, mould oil which may affect the adhesion. Before the application the substrate must be sufficiently cured in a way that any shrinkage has already occurred. Prime the substrate with the respected primer at least one day before the application of **weberpas deco 350**.

PRODUCT APPLICATION

weberpas deco 350 is ready to use and just require to mix with a low speed drill to be homogeneous or manually using a clean stick or whisk.

Clean potable water can be added before mixing to aid workability; max 0.5lit per 20kg bucket; mix thoroughly before usage.

- Ref: 310 is applied using a steel trowel then finished by applying horizontal or vertical movement to get the Ribbed finish.
 - Ref 320: is applied using a cotton roller.
 - Ref 330: is applied using a cotton roller.
 - Ref 350, 360 & 370 can achieve different textures:
1. Sanded finish obtained by using steel trowel, then using plastic trowel in circular movement to get the sanded finish.
 2. Flat finish obtained by using steel trowel then finished with plastic roller.
 3. Spray finish can be achieved by using suitable spraying machine.
- Raised or recessed joints must be completely coated.

- Ideal application temperature 5-35°C; protect from direct sun and rain during application and drying period for minimum 2 days.
- Only use clean tools.
- Use only potable water for mixing and cleaning of tools

CONSUMPTION

Refer to the table of characteristics, Consumption depends on the chosen product and substrate condition.

STORAGE

12 months after manufacturing date in its original packing non open, protected from frost and heat.

TYPICAL CHARACTERISTICS OF DIFFERENT TEXTURES

	Ref 310	Ref 320	Ref 330	Ref 350	Ref 360	Ref 370
Appearance	Acrylic sanded coating	Acrylic waterproof coating	Plastic decorative coating	Acrylic textured coating	Acrylic textured coating	Acrylic textured coating
Finish type	Ribbed finish	Roll finish	Roll finish	Sanded finish	Sanded finish	Sanded finish
Primer	weberpas PR 300					
Paste density, kg/LT	1.40±0.05	1.40±0.05	1.60±0.05	1.70±0.05	1.70±0.05	1.70±0.05
Dry Film Thickness	2mm	240 microns	240 microns	1.5mm	1mm	0.6mm
Consumption, kg/m ²	2.5-3	0.5-1kg/m ² depends on the thickness	1-1.5	2.5-3	2.5-3	2.5-3
Elongation at break	-	200%	-			

*Ideal application temperature for all textures 5-35 °C

TEXTURES



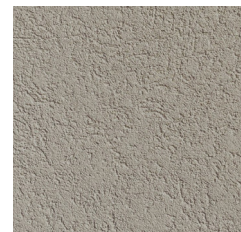
310 - Ribbed 2mm
Ready to use acrylic ribbed finish coating



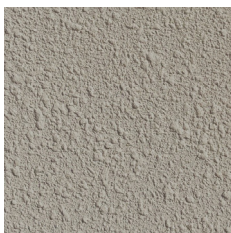
320 - Rolled
Ready to use acrylic roll finish coating



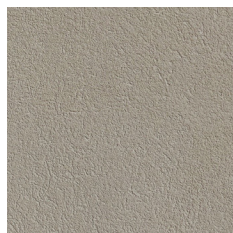
330 - Decorative
Ready to use synthetic decorative coating



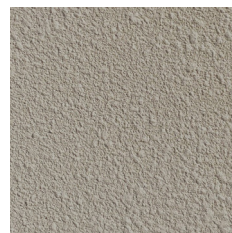
350 - Sanded 1.5mm
Ready to use acrylic sand finish coating



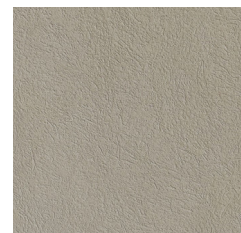
350 - Spray 1.5mm
Ready to use acrylic spray finish coating



360 - Sanded 1mm
Ready to use acrylic sand finish coating



360 - Spray 1mm
Ready to use acrylic spray finish coating



370 - Sanded 0.6mm
Ready to use acrylic sand finish coating



370 - Spray 0.6mm
Ready to use acrylic spray
finish coating



370 - Flat 0.6mm
Ready to use acrylic spray &
flat coating



Stain smooth
Ready to use smooth acrylic
coating

SAFETY PRECAUTIONS

Avoid prolonged contact with skin. Wear protective gear for hands & eyes. Splashes on the skin should be washed away by cleaning with soap and water. In case of contact with eyes, wash thoroughly with clean water. If swallowed, do not induce vomiting. In both cases seek medical attention. The product is non-flammable.

DISCLAIMER

While the company guarantees its products against defective materials, the use and application of these products are made without guarantee since the conditions of their application are beyond its control. It is recommended to verify with the company that the product is suitable for the intended use, and that this Data Sheet version is the latest one. The company may modify it without prior notice. Technical characteristics are listed for guidance only. For more information, please contact the company's office in your location.

NOTE

The information included on this Technical Data Sheet is the sole property of Saint-Gobain Middle East Holding SAL (Previously SODAMCO Holding SAL). The unauthorized disclosure, use, dissemination or copying (either whole or partial) of this data sheet or any information it contains, is prohibited and subject to legal pursuit.