

Admix PCI (Oman)

Bipolar concrete
penetrating corrosion
inhibiting admixture

*Admixtures & Concrete
Related Products*

- Effective even in the presence of high amount of chlorides
- Does not affect bond strength of new concrete to reinforcement bars
- Does not entrain air
- Does not affect mechanical strength characteristics of concrete/mortar

CHARACTERISTICS

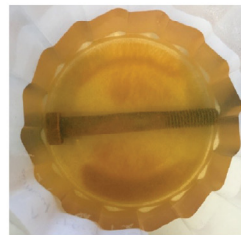
Base	Water based organic corrosion inhibitor
Color	Brownish
Specific gravity	1.058±0.020 at 25°C
PH	minimum 9

INSTRUCTIONS FOR USE

Admix PCI is used as an admixture, by adding into wet concrete mix along with batch water during the mixing of cement, sand, aggregate before placement or pouring into transit mixer to impart corrosion protection to the embedded reinforcement.

DOSAGE RATES

Admix PCI is recommended for use at a dosage rate of 2kg/m³ of concrete for all applications and corrosion environments. For specific applications, a lower dosage ranging between 1.6 kg/m³ to 2kg/m³ is applicable but will be strictly depending on the proposed Concrete Mix design and W/C ratio. Therefore prior concrete trials and testing are required.



steel rod with water



steel rod with water +1%
Admix PCI

PACKAGING

Admix PCI supplied in:

- Bulk
- 1000 lit. totes
- 200 lit. drum
- 20 lit. pail

STORAGE

Can be stored up to 12 months from manufacturing date under cover, out of direct sunlight and protected from extreme temperatures.

HEALTH & SAFETY

In case of frost, the product recovers its properties after progressive thawing and homogenizing by agitation. In case of contact with skin or eyes, rinse thoroughly with water. If

PRODUCT

Admix PCI is a water based organic hi-tech corrosion inhibitor system that works on the Bipolar Inhibition Mechanism (B.I.M). B.I.M. inhibits corrosion of steel in concrete at both the poles, cathodic and anodic simultaneously. **Admix PCI** by virtue of its high vapor pressure & affinity for the embedded metal diffuses through densest concrete to reach the corroding steel. The migration of **Admix PCI** takes place over a prolonged period of time and hence this molecular layer shall continue to protect rebar by its constant presence.

SCOPE OF USE

- Protection of concrete structures
- RCC elements/structures exposed to corrosive environment
- Infrastructures and sub-structures: high-ways, bridges, tunnels, Mega reservoirs, pile foundation, etc...
- Structures exposed to saline atmosphere
- Marine and coastal structures, splash zones
- Sewage systems

ADVANTAGES

- Penetrates to rebar over a prolonged period and arrest corrosion of rusting steel
- Eco-friendly
- Nitrite and chromate free
- Non-deleterious unlike conventional rust converters

irritation persists, seek medical attention. If swallowed, do not induce vomiting and seek medical attention.

QUALITY STATEMENT

All our products are manufactured to comply with our internal QA/QC program and quality management system to ensure consistency and quality.

DISCLAIMER

While the company guarantees its products against defective materials, the use and application of these products are made without guarantee since the conditions of their application are beyond its control. It is recommended to verify with the company that the product is suitable for the intended use, and that this Data Sheet version is the latest one. The company may modify it without prior notice. Technical characteristics are listed for guidance only. For more information, please contact the company's office in your location.

NOTE

The information included on this Technical Data Sheet is the sole property of Saint-Gobain Middle East Holding SAL (previously SODAMCO Holding). The unauthorized disclosure, use, dissemination or copying (either whole or partial) of this data sheet or any information it contains, is prohibited and subject to legal pursuit.